

NEW



**Michelle Boshoff**  
083 272 7122  
michelle@propertyshop.co.za



**Ruan Coetsee**  
0824019547

ruan@propertyshop.co.za

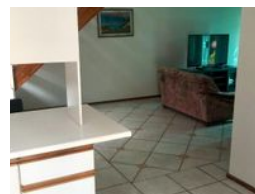
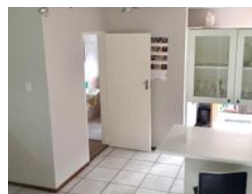
Contact Head Office

012 9989813

829 St Bernard Street  
Garsfontein  
Pretoria



Web Ref RL13457



**R1,250,000**

🛏️ 3 🚿 2 🚗 1

**Monthly Bond Repayment** R12,902.35

Calculated over 20 years at 11% with no deposit.

**Transfer Costs** R36,117.00 **Bond Costs** R27,105.00

These calculations are only a guide. Please ask your conveyancer for exact calculations.

**Monthly Levy** R2,990 **Monthly Rates** R900

### Spacious Living

Tiled Patio and good sized garden  
Own private garden  
\* 3 Bedrooms  
\* 2 Bathrooms  
\* Lounge  
\* Dining room  
\* TV Room  
\* Study  
\* Garage  
\* Patio  
\* Garden

### Features

**Pets Allowed** Yes

#### Interior

Bedrooms	3
Bathrooms	2
Kitchens	1
Recep. Rooms	3
Studies	1

#### Exterior

Garages	1
Security	Yes
Pool	No

#### Sizes

Floor Size	128m <sup>2</sup>
Land Size	300m <sup>2</sup>